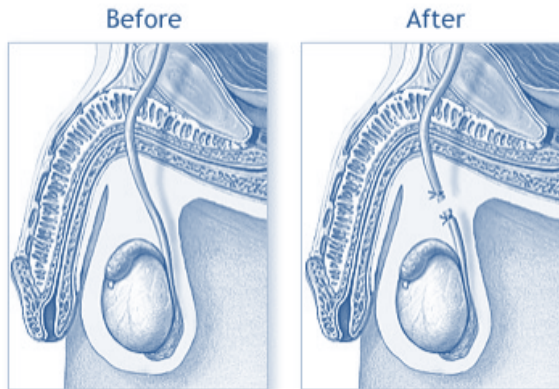


VASECTOMY

This is a procedure to ensure male sterility. A small segment of the two "vas deferens" (tube which expels sperm from each testis into prostate/penis) is cut out and the ends of the tube are tied off. A semen analysis is required 3 months after the procedure and patients must liaise with Dr Elmes or their GP before they are confirmed to be infertile.



DR MARTIN ELMES
UROLOGICAL SURGEON

Specialising in
Robotic Prostate and Kidney
surgery

Advanced BPH treatments

Erectile Dysfunction Surgery

With over 15 years of expertise in the field of Urology, Dr Elmes provides a full range of high quality urological services for patients with the use of advanced techniques and cutting edge equipment to perform procedures. Dr Elmes is highly qualified in the field of urology having completed extensive surgical training throughout Melbourne and Sydney.

His main interests in the field include:

Minimally invasive Robotic Prostate & Kidney surgery

Advanced BPH treatments

Laser prostate enucleation (HoLEP)

Rezum water vapour steam therapy

UroLift

Erectile Dysfunction

Penile Prosthesis (no-touch technique)

Visit our website or call us on (07) 5575 7922 for more information about our urological services.

Varsity Lakes
Suite 2 Level 1
2 Lake Street
Varsity Lakes QLD 4227

Pindara
Suite 8 Level 1 – Pindara Place
13 Cararra St
Benowa QLD 4217

Contact us
Phone: 07 5575 7922
Fax: 07 5575 8922

Email: admin@goldcoasturologist.com.au
www.goldcoasturologist.com.au

A PATIENT GUIDE TO SCROTAL SURGERY

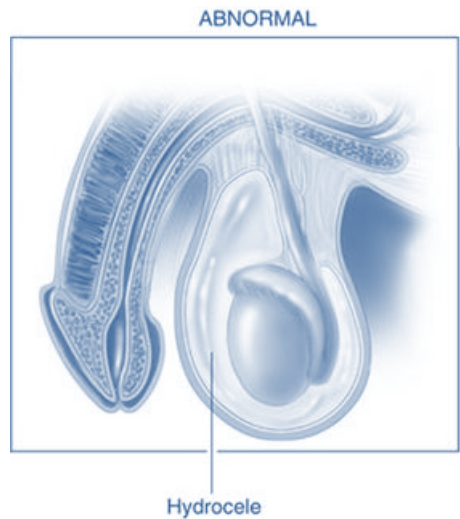
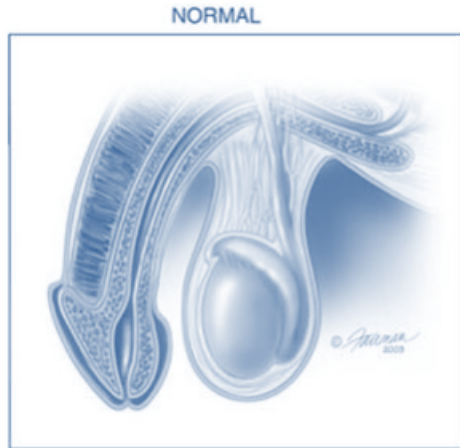


DR MARTIN ELMES
UROLOGICAL SURGEON

WHAT IS A HYDROCELE?

This is an abnormal collection of fluid around either testis, which generally gets larger overtime and rarely is it caused by underlying testicular cancer.

The sac of fluid needs surgical removal under general anaesthesia. If it is a large volume then you will be in hospital overnight with a drain tube placed in the scrotum.



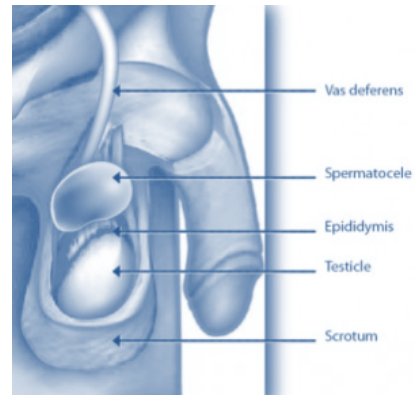
WHY IS AN EPIDIDYMAL CYST

This is simply a cyst or cysts (fluid filled sack) in the epididymis – a collection of tubes/ducts, which are attached to the back of each testis and house sperm. It is not cancerous.

Normal:



Abnormal:



BEFORE SURGERY

Dr Elmes rooms or the Hospital will instruct you a week before your surgery with information regarding Hospital admission times, fasting instructions, medications to cease or continue. You will also be provided information about pathology tests that may need to be done before your procedure.

AFTER SURGERY CARE

Expect:

- Some scrotal/testicular pain and swelling

What to do:

- Wear supportive underwear for at least 2 weeks
- Take it easy for at least 2 weeks

Avoid:

- Sexual intercourse for 2 weeks

Inform Dr Elmes' rooms or admit to the John Flynn Emergency department if:

- Unable to urinate
- Increasing scrotal pain/swelling
- Fevers/unwell

Risks:

- Bleeding/haematoma 1%
- Infection 2%
- Anaesthetic complications – AMI/DVT/PE/Stroke
- Specific risks for each operation will be discussed with you by Dr Elmes